

A modern office interior with a high ceiling featuring exposed wooden beams and a brick wall. The space is furnished with several desks and ergonomic chairs. A large, semi-transparent dark grey rectangle is overlaid on the image, containing the text.

INNCFITTM

FURNITURE ADD-ONS

for

WORK SPACES

MUMBAI | PUNE | BENGALURU | DELHI NCR

INNOFITT™



SINCE 1981

The first company in India to innovate & introduce:

- Pop up Boxes with Indian electricals
- Monitor Arms
- CPU Holders

QUALITY

- A large number of leading architects and contractors rely on our trouble-free products for their projects.
- Most of our products are proudly **Made In India**



CUSTOMER OBSESSED

- We provide highest level of customer service
- We customize as per our customer's needs
- It is always our relentless quest to constantly innovate and provide productivity enhancing workspace additions.





MONITOR STANDS - ALUMINIUM SERIES



Dual Monitor

**Product Code:
IS FX 2 F**



Single Monitor

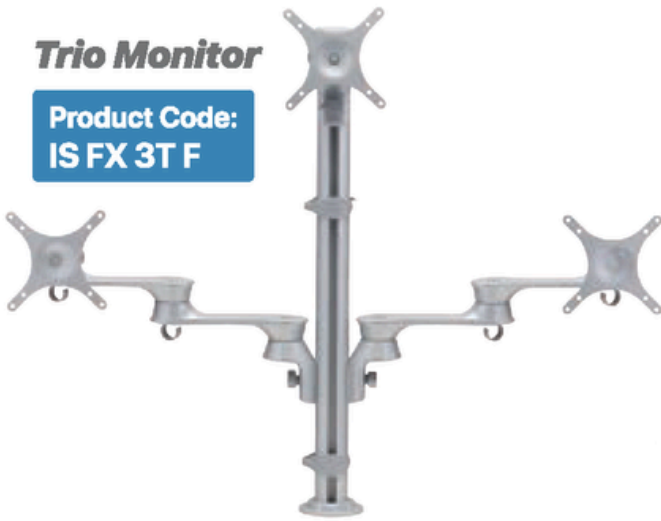
**Product Code:
IS FX F**

- Ergonomic: Reduces risk of Head, Neck and Eye strain
- Precision engineered to prevent cantilever load effect
- Allows user to adjust the position of one or multiple screens with minimum effort and maximum precision
- Space Saving
- Swivel, Tilt and 360° rotation allows you exceptional mobility
- Concealed Cable Management
- Colour: Metallic Silver Grey



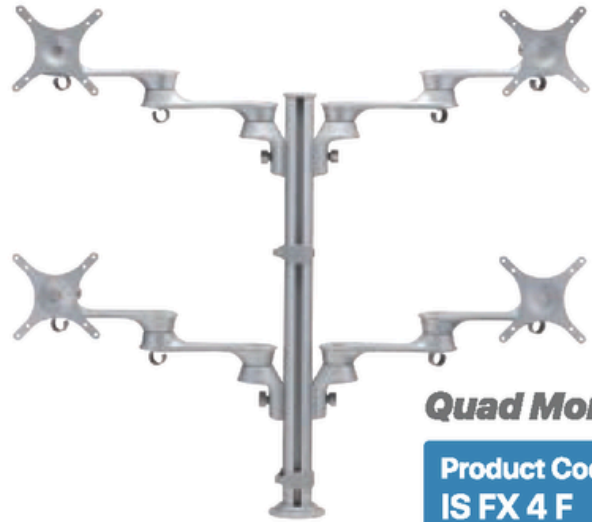
Trio Monitor

Product Code:
IS FX 3T F



Quad Monitor

Product Code:
IS FX 4 F



Dual Monitor (Back to Back)

Product Code:
IS FX 2 BB F



Single Monitor-Short Link

Product Code:
IS FX SL F

Colour: Metallic Silver Grey



Flange Mount



Clamp Mount



Free Standing
(For selected models)





Partition Mount

Product Code:
IS FX PM 02

Dual Arm with Freestanding Base

Product Code:
IS FX 2 FS



Dual Monitor Vertical
(Short link)

Product Code:
IS FX 2 SL DV F

Dual Monitor
(Vertical mount)

Product Code:
IS FX 2 DV F



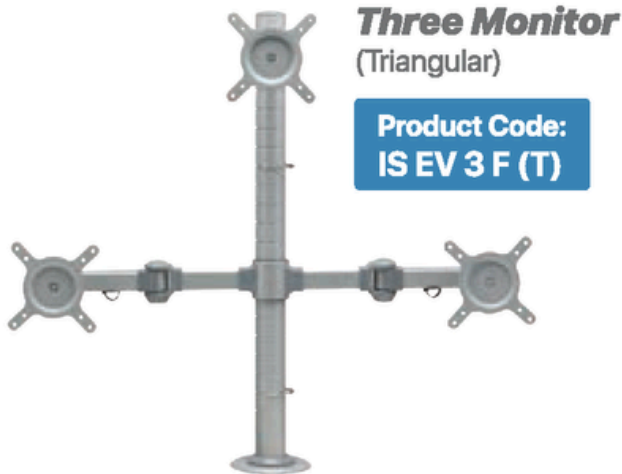
- Height Adjustable
- Increased viewing comfort.
Reduced Eye, Back and Neck strain.
- Portrait and Landscape viewing options
- Supports monitors up to 8 kg

- Compatible with all VESA Standard Monitors
(75mm x 75mm and 100mm x 100mm)
- Suitable for fixing on Partition as well as on Wall
- Colour: Metallic Silver Grey



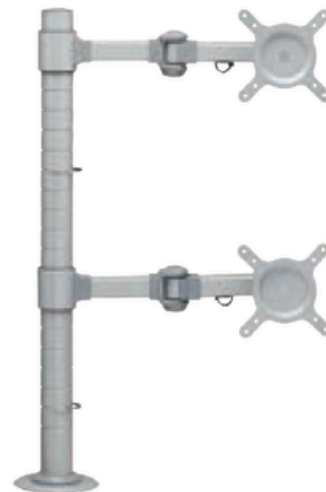
Three Monitor Arm
(Horizontal)

Product Code:
IS EV 3 F (H)



Three Monitor
(Triangular)

Product Code:
IS EV 3 F (T)



Double Monitor
(Vertical Mount)

Product Code:
IS EV 2 DV F

Partition Mount



Single Link
± 45° Tilt, ± 30° Swivel

Product Code:
IS EV WMS



Double Link
± 45° Tilt, ± 60° Swivel

Product Code:
IS EV WMD

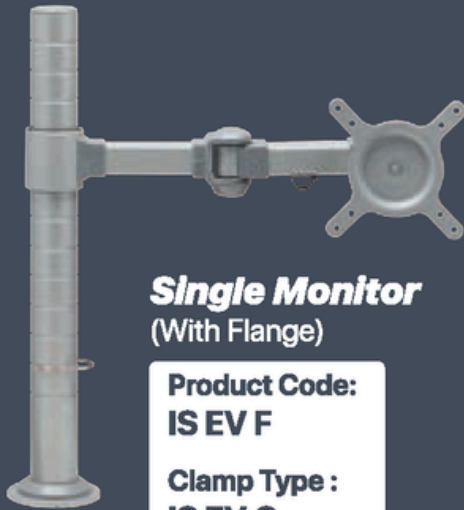
- Keeping monitors off the table will help to save space. One can plan 6" shorter table, hence cost of table is reduced.
- Mounting options-
Flange | Clamp |
Free standing (For selected models)
- Supports monitors up to 10 kg

- Portrait and Landscape viewing option
- Compatible with all VESA Standard Monitors
(75mm x 75mm and 100mm x 100mm)
- Colour: Metallic Silver Grey





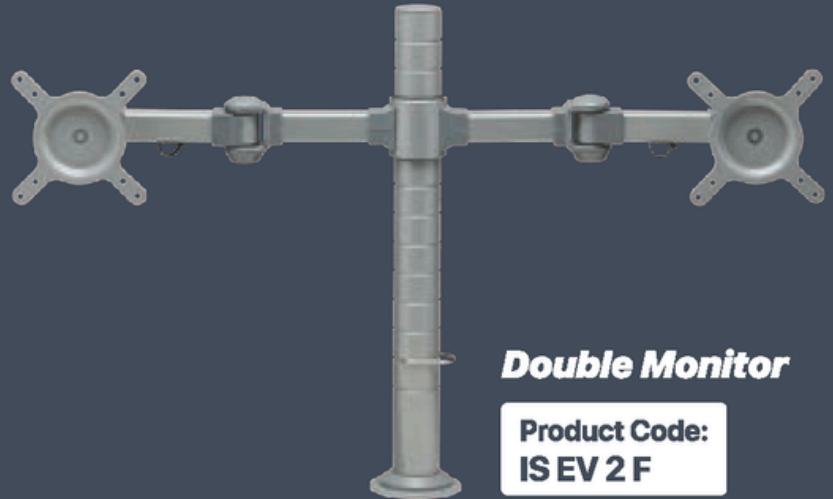
MONITOR STANDS - STEEL SERIES



Single Monitor
(With Flange)

Product Code:
ISEV F

Clamp Type:
ISEV C



Double Monitor

Product Code:
ISEV 2 F



Single Monitor
(Short Link)

Product Code:
ISEV 1 SLF



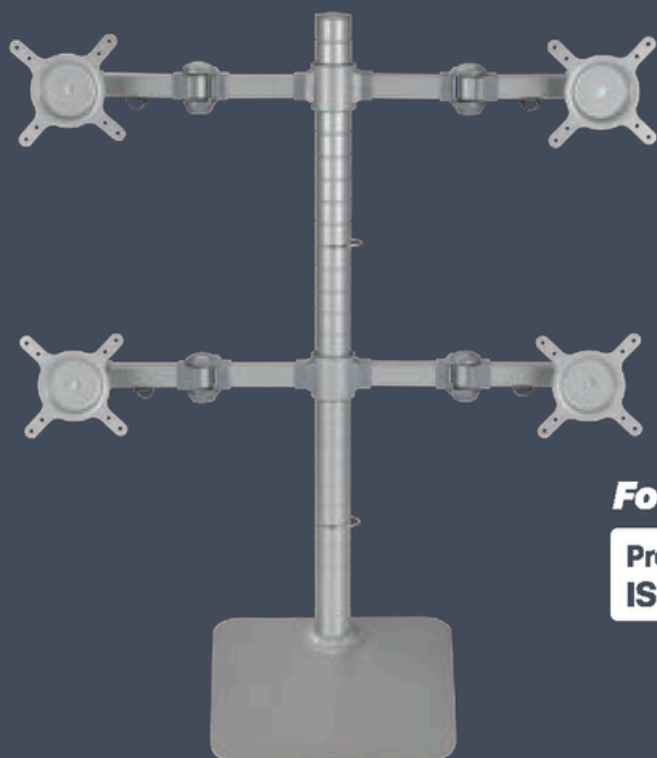
Dual Monitor
(Short Link)

Product Code:
ISEV 2 SLF

- Adjust monitor as per individual user comfort - Height, Distance & Angle
- Space Saving. Since footprint of stand is much less than footprint of monitor base, architects can shorten table depth by 6"
- Portrait and Landscape viewing options

- Compatible with all VESA Standard Monitors (75mm x 75mm and 100mm x 100mm)
- With Cable Management for neat wiring
- Each arm supports monitors up to 10 kg
- Colour: Metallic Silver Grey





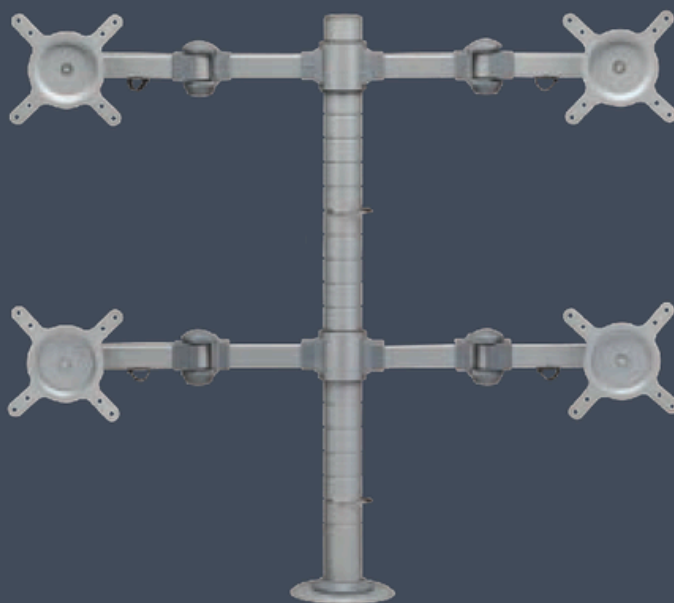
Four Arm with Freestanding Base

Product Code:
ISEV 4 FS

Colour: Metallic Silver Grey

Four Monitor

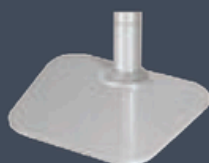
Product Code:
ISEV 4 F



Flange Mount



Clamp Mount



Free Standing
(For selected models)

KBD SOLUTIONS (PLASTIC)



Keyboard Drawer (Denzo)
with softPAD

Keyboard Drawer (Denzo)

- Large Pencil Compartment
- Tray size: 535mm (W) x 200mm (D)

Product Code:
IS KD Denzo (Basic)
IS KD Denzo MT

(With Mouse Tray)
Colour: Black

- With cushioned softPAD
- Tray size: 535mm (W) x 200mm (D)

Product Code:
IS KD Denzo SP
IS KD Denzo SP MT

(With Mouse Tray)

Keyboard Drawer (Plastic) - KD 575

- Integral Pencil Holder
- Tray size: 575mm (W) x 300mm (D)

Product Code:
IS KD 575 P
IS KD 575 P MT

(With Mouse Tray)
Colour: Black



KBD SOLUTIONS (METAL)



Keyboard Drawer (Metal) 25"

- Accommodates Mouse alongside Keyboard
- Tray size: 645mm (W) x 225mm (D)

Product Code:
IS KD 645 M
IS KD 645 M SP

(With softPAD)
Colour: Black



Keyboard Drawer (Metal) 19" SST

- With High Performance Imported Slides
- Tray size: 510mm (W) x 200mm (D)
- Economical

Product Code:
IS KD 510 M SST
IS KD 510 MT SST

(With Mouse Tray)
Colour: Black



Keyboard Drawer (Metal) 19"

- With High Performance Imported Slides
- Tray size: 510mm (W) x 200mm (D)

Product Code:
IS KD 510 M
IS KD 510 M MT

(With Mouse Tray)
Colour: Black

- With cushioned softPAD
- Tray size: 535mm (W) x 200mm (D)

Product Code:
IS KD 510 M SP
IS KD 510 M SP MT

(With Mouse Tray)
Colour: Black





CPU Holder (Fixed)

Product Code:
IS CPU HL
IS CPU HL SLM

- Width Adjustable (150mm to 225mm)
- Height Adjustable (300mm to 475mm)

Colour: Black

Also available in **Slim Version**
Width Adjustable (80-120)



**Load
Bearing
Capacity
8-10 kg**

CPU Holder (Swivel & Pull Out)

Product Code:
IS CPU HL SW PL
IS CPU HL SW

- Swivel & pull out for easy access to the rear of the CPU
- 360° Swivelling
- Height Adjustable (300mm to 425mm)
- Width Adjustable (150mm to 225mm)

Colour: Black

Also available in **Swivel** only



CPU Trolley SST

Product Code:
IS CPU SST

- With Lockable Castors for easy mobility
- Width Adjustable
- Economical

Colour: Black



Thin Client Holder

Product Code:
IS TCH 01

- Saves table space
- 360° Swivelling
- Easy access to rear panel
- Height Adjustable (30mm to 50mm)

Colour: Black



GOOD POSTURE STARTS FROM YOUR FEET

ErgoREST- Footrest

**Product Code:
IS ER 445**



- Ergonomic Footrest
- Promotes Stress-free Posture
- Angle Adjustable
- Slip resistant surface
- Reduces pressure on the back of the thigh
- Platform Size: 445mm (W) x 295mm (D)

Colour: Black

COMPLETE CONVENIENCE AT YOUR FINGERTIPS



Easyfit Drawer - Small

**Product Code:
IS ED 3025 F**

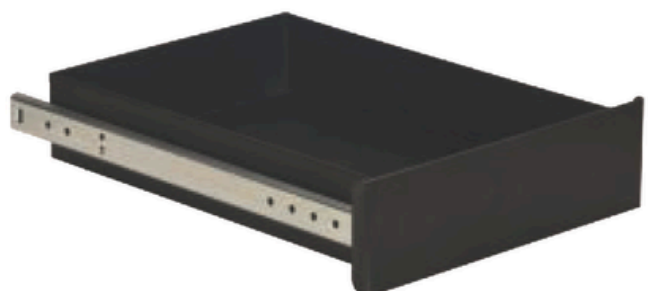
Inner Dimension
215mm (W) x 320mm (D) x 60mm (H)

Cost-effective alternative
to 3 drawer pedestal

Easyfit Drawer - Big

**Product Code:
IS ED 4130 F**

Inner Dimension
415mm (W) x 300mm (D) x 60mm (H)



- Ready to install
- Slides and Mounting Brackets included
- Can use Wooden Facia instead of Metal Facia



MONITOR ARM WITH LAPTOP HOLDER



Laptop Holder

Product Code:
IS EV LPTS2 F
IS EV LPTS2 C



- Desk mounted Laptop Stand
- Robust Ergonomic Design
- For Laptops up to 17 inches
- Swivel and Height Adjustable
- Saves table space
- Option of Clamp Mount or Flange Mount
- Colour: Metallic Silver Grey



LIST OF INSTALLATIONS

CO-WORKING

- Smartworks
- Simpliwork
- Awfis
- UrbanWrk
- WeWork
- Indiqube
- Workafella
- ClayWorks
- Table Space
- Enzyme

CORPORATES

- Mercedes Benz
- Samsung
- NDTV
- Asian Paints
- Taj Group
- Cap Gemini

BFSI

- Citi
- ICICI Bank
- HDFC Bank
- Morgan Stanley
- BNP Paribas
- Standard Chartered
- Axis Bank
- State Bank of India
- JPMC
- Nomura

INSTITUTIONAL

- Mumbai Police Control Room
- Bangalore Air Traffic Control
- Indian Navy
- Bombay Stock Exchange
- Manipal School of Architects
- Mumbai Air Traffic Control
- IIM Ahmedabad
- IIT Madras

IT

- IBM
- Dell
- HP
- Google
- Microsoft
- TCS
- Wipro
- Infosys
- Directi
- Genpact

CORPORATE OFFICE & DISPLAY:

No. 506 Ascot Centre, Sahar Airport Rd, Opp. ITC Maratha, Andheri East, Mumbai, Maharashtra 400099.

PUNE FACTORY & DISPLAY:

Plot No 114, Ramtekdi Industrial Estate, Near Vertiv, Hadapsar, Pune 411 013.

 1800 120 2429  marketing@innofitt.com  www.innofitt.com

MUMBAI | PUNE | BENGALURU | DELHI NCR