

The background image shows a modern office space. It features a high ceiling with exposed wooden beams and a brick wall. Several desks with computers and office chairs are visible. A large window on the right side shows a view of a brick building and some greenery. The overall aesthetic is industrial and contemporary.

**INNCFITT™**

**FURNITURE ADD-ONS**

*for*

**WORK SPACES**

**MUMBAI | PUNE | BENGALURU | DELHI NCR**





**SINCE 1981**

The first company in India to innovate & introduce:

- Pop up Boxes with Indian electricals
- Monitor Arms
- CPU Holders

**QUALITY**

- A large number of leading architects and contractors rely on our trouble-free products for their projects.

- Most of our products are proudly  
**Made In India**



**CUSTOMER  
OBSESSED**

- We provide highest level of customer service
- We customize as per our customer's needs
- It is always our relentless quest to constantly innovate and provide productivity enhancing workspace additions.



## THE LEADING PROVIDER OF POWER MODULES MANUFACTURED IN INDIA



**PDX Console**  
Clamped to table top edge



**PDX Surface**  
Mounted on the surface of the table



**PDX PDU**  
Mounted under the table on Raceway



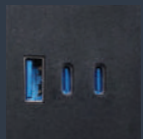
**PDX PDU OT**  
Mounted over the table



**PDX PDU UT**  
Mounted under the table

IEC Certified: 60884-2-7

### AVAILABLE IN VARIOUS CONFIGURATION OPTIONS



USB A+C+C  
GAN Charger 65W



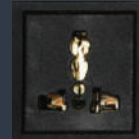
USB A+C  
20W PD+QC3.0



Switch



Indian Power  
Socket



Universal Power  
Socket



Data Cat6



Telephone



HDMI



USB



GST Connector



GST Multiway Splitter  
(1 x 3 & 1 x 5)

Console



## ***PDX RANGE***

Surface



PDU-Raceway



PDU-Under Table



PDU-Over Table



- Made in India
- All configurations possible
- Import substitute
- Faster lead periods
- Available with Indian sockets
- Customisable for cluster workstation



## WIRELESS CHARGER

### **Concealed Wireless Qi Charger**

**Product Code:**  
**IS QF 10**



- Fast Wireless Charging up to 15W
- Charging Distance is 10mm
- No Stress of Spills
- Attached under the table—Truly Invisible!
- Supports all Qi Wireless Charging devices including iPhone, Samsung Galaxy series, Nothing Phone etc.

### **Concealed Wireless Qi Charger**

**Product Code:**  
**IS QF 30**

- Wireless Charging up to 10W
- Charging Distance is 30mm
- No Stress of Spills
- Attached under the table—Truly Invisible!
- Supports all Qi Wireless Charging devices including iPhone, Samsung Galaxy series, Nothing Phone etc.



### **Wireless Qi Charger - On Surface**

**Product Code:**  
**IS QF OSI**

- Fast Wireless Charging up to 15W
- Cut Out diameter: 74Ø
- Flush with Table Top
- Economical option for large deployments
- Supports all Qi Wireless Charging devices including iPhone, Samsung Galaxy series, Nothing Phone etc.





COMPACT

- Perfect for Individual Workstations and Meeting Rooms
- Space Saving



Product Code: IS CMP PSAC

Power, Switch, A+C Charger  
20W PD+QC3.0



Product Code: IS CMP PSUD

Power, Switch, USB Charger, Data



Product Code: IS CMP PSUU

Power, Switch, 2 USB Charger



Product Code: IS CMP PSUH

Power, Switch, USB, HDMI



Product Code: IS CMP PSH

Power, Switch, HDMI



Product Code: IS CMP PSD

Power, Switch, Data



Product Code: IS CMP PS

Power, Switch



Out to Out Size: Ø 100  
Cut Out Size: Ø 92

Switch Socket  
CE Marked



# DeskPort

# INNOFIT™

## ULTRA COMPACT



Product Code: IS UC PS

Power, Switch



Product Code: IS UC PU

Power, USB Charger

- Colour: Black
- Table Cut Out size: 76 x 62mm

Switch Socket  
CE Marked

## MIKRO USB



Product Code: IS MUC 53

USB Charger A+C

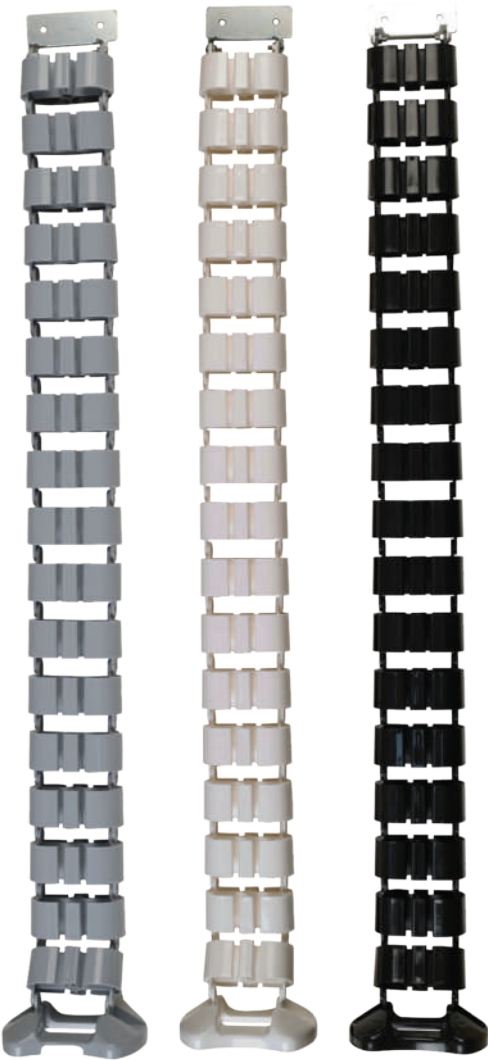
- With 20W PD+QC3.0
- Colour: Black
- Table Cut Out size: Ø 53mm



20W PD+QC3.0  
USB A+C



**VERTEBRAE**



Product Code:  
IS VBT 23L/CHB

- For HAT Back to Back Connector



Product Code:  
IS VBT 17L/BC

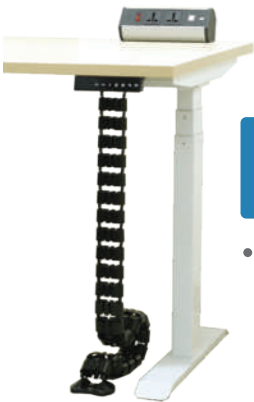
- Vertebrae for 750mm Height Fixed Table



Product Code:  
IS VBT 26L/HZ

- Horizontal Cable Management with Anti-sag Clip

**VERTEBRAE FOR HEIGHT ADJUSTABLE TABLE**



Product Code:  
IS VBT 29L/BC

- Vertical Cable Manager for Height Adjustable Tables

Colours: Grey, White & Black  
Material: Plastic



Product Code:  
IS SGT 01

- Spring Tube Vertical Cable Manager (740mm)

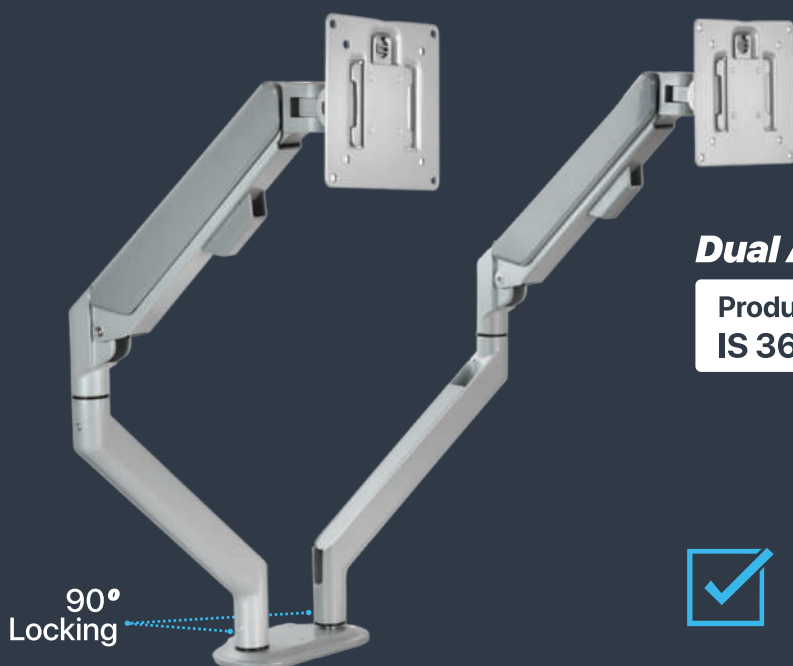
Colour: White





## ***THE PREFERRED CHOICE FOR MONITOR ARMS IN INDIA***

### ***DYNAMIC MONITOR ARM***

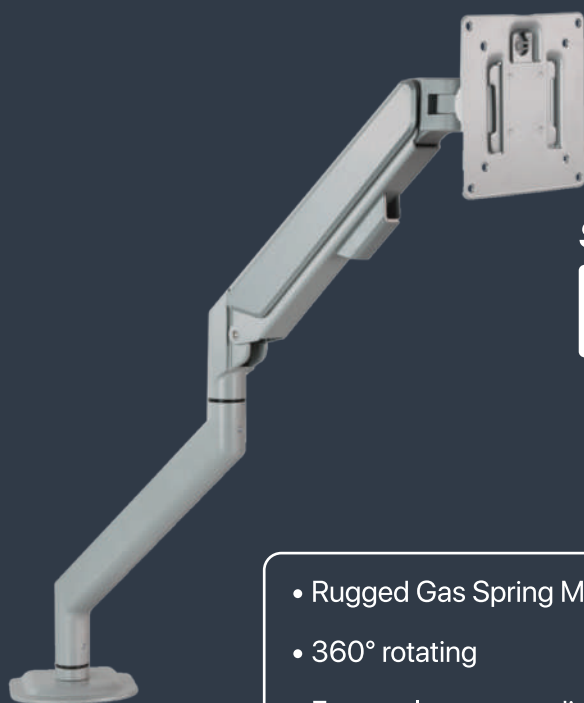


#### ***Dual Arm***

Product Code:  
**IS 360 EM 2**



**BIFMA TESTED  
ANSI/BIFMA X5.5-2021**



#### ***Single Arm***

Product Code:  
**IS 360 EM 1**



- Rugged Gas Spring Mechanism
- 360° rotating
- Extremely easy to adjust to desired position
- Quick release VESA mount
- Height and Distance adjustable

- Size of monitor up to 32"
- Concealed Cable Management
- Both Clamp and Flange mounting solutions included
- Supports monitors up to 9 kg



## MONITOR STANDS - ALUMINIUM SERIES



**Dual Monitor**

**Product Code:**  
**IS FX 2 F**



**Single Monitor**

**Product Code:**  
**IS FX F**

- |   |  |
|---|--|
| <ul style="list-style-type: none"> <li>• Ergonomic: Reduces risk of Head, Neck and Eye strain</li> <li>• Precision engineered to prevent cantilever load effect</li> <li>• Allows user to adjust the position of one or multiple screens with minimum effort and maximum precision</li> </ul> | <ul style="list-style-type: none"> <li>• Space Saving</li> <li>• Swivel, Tilt and 360° rotation allows you exceptional mobility</li> <li>• Concealed Cable Management</li> <li>• Colour: Metallic Silver Grey</li> </ul> |
|---|--|





**Partition Mount**

Product Code:  
**IS FX PM 02**



**Dual Arm with Freestanding Base**

Product Code:  
**IS FX 2 FS**



**Dual Monitor Vertical**  
(Short link)

Product Code:  
**IS FX 2 SL DV F**

**Dual Monitor**  
(Vertical mount)

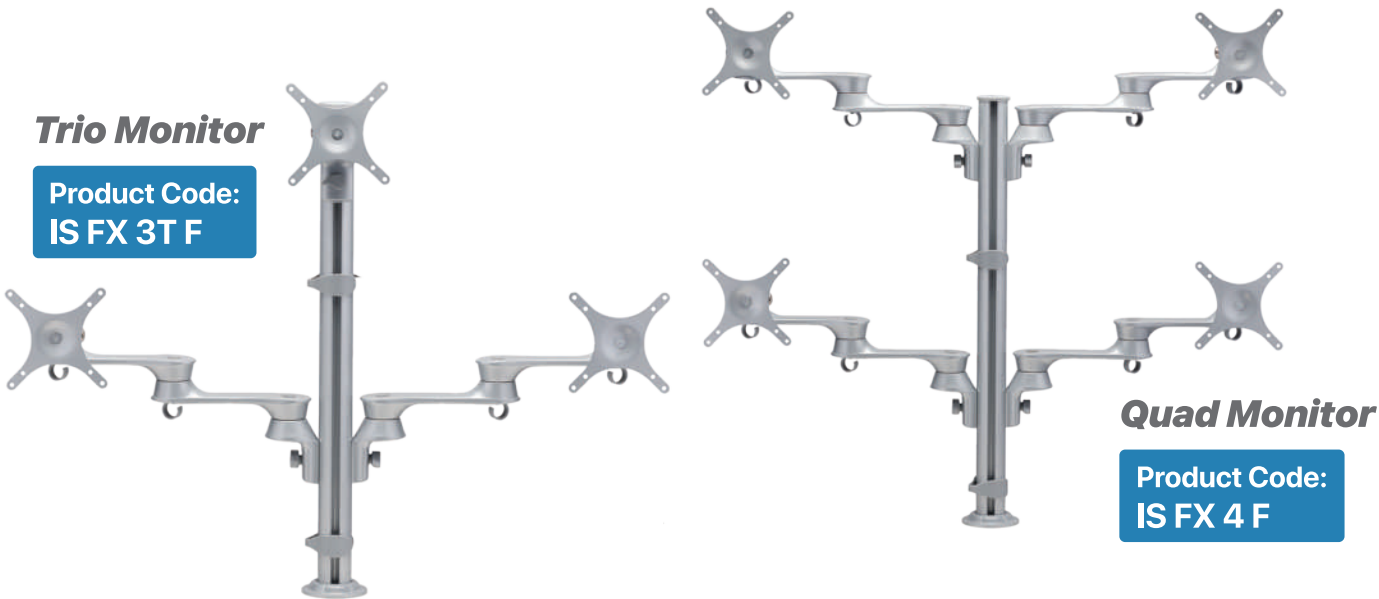
Product Code:  
**IS FX 2 DV F**



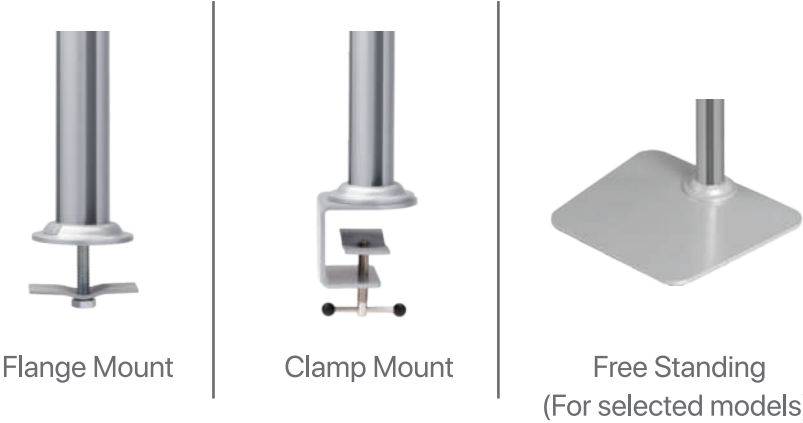
- Height Adjustable
- Increased viewing comfort.  
Reduced Eye, Back and Neck strain.
- Portrait and Landscape viewing options
- Supports monitors up to 8 kg

- Compatible with all VESA Standard Monitors  
(75mm x 75mm and 100mm x 100mm)
- Suitable for fixing on Partition as well as on Wall
- Colour: Metallic Silver Grey



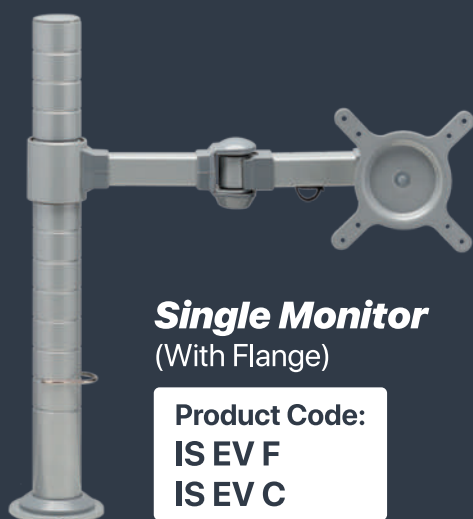


Colour: Metallic Silver Grey



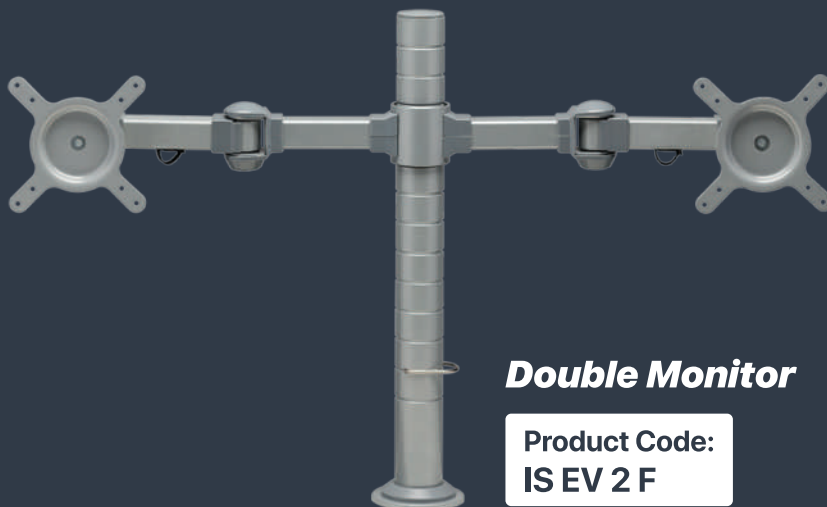


## **MONITOR STANDS - STEEL SERIES**



**Single Monitor**  
(With Flange)

Product Code:  
**IS EV F**  
**IS EV C**



**Double Monitor**

Product Code:  
**IS EV 2 F**



**Single Monitor**  
(Short Link)

Product Code:  
**IS EV 1 SL F**



**Dual Monitor**  
(Short Link)

Product Code:  
**IS EV 2 SL F**

- Adjust monitor as per individual user comfort - Height, Distance & Angle
- Space Saving. Since footprint of stand is much less than footprint of monitor base, architects can shorten table depth by 6"
- Portrait and Landscape viewing options

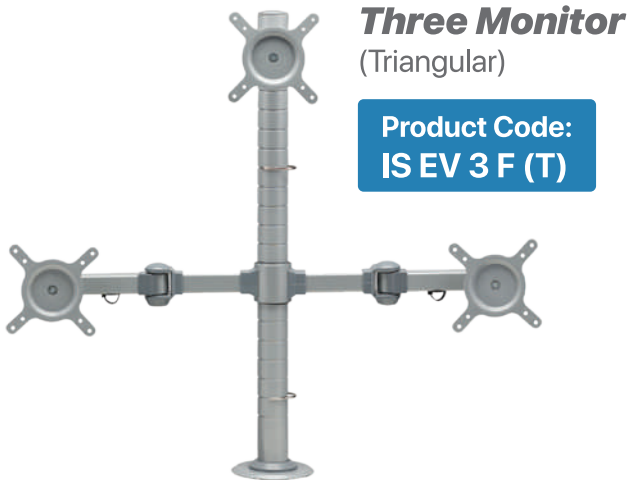
- Compatible with all VESA Standard Monitors (75mm x 75mm and 100mm x 100mm)
- With Cable Management for neat wiring
- Each arm supports monitors up to 10 kg
- Colour: Metallic Silver Grey





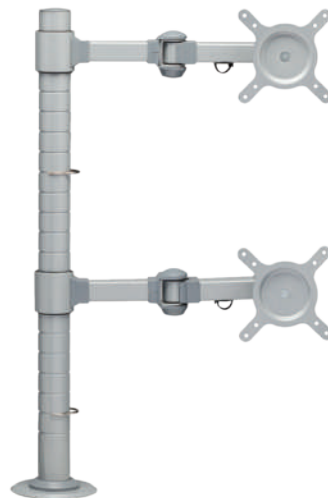
**Three Monitor Arm**  
(Horizontal)

Product Code:  
**IS EV 3 F (H)**



**Three Monitor**  
(Triangular)

Product Code:  
**IS EV 3 F (T)**



**Double Monitor**  
(Vertical Mount)

Product Code:  
**IS EV 2 DV F**

## Partition Mount



**Single Link**  
± 45° Tilt, ± 30° Swivel

Product Code:  
**IS EV WM S**



**Double Link**  
± 45° Tilt, ± 60° Swivel

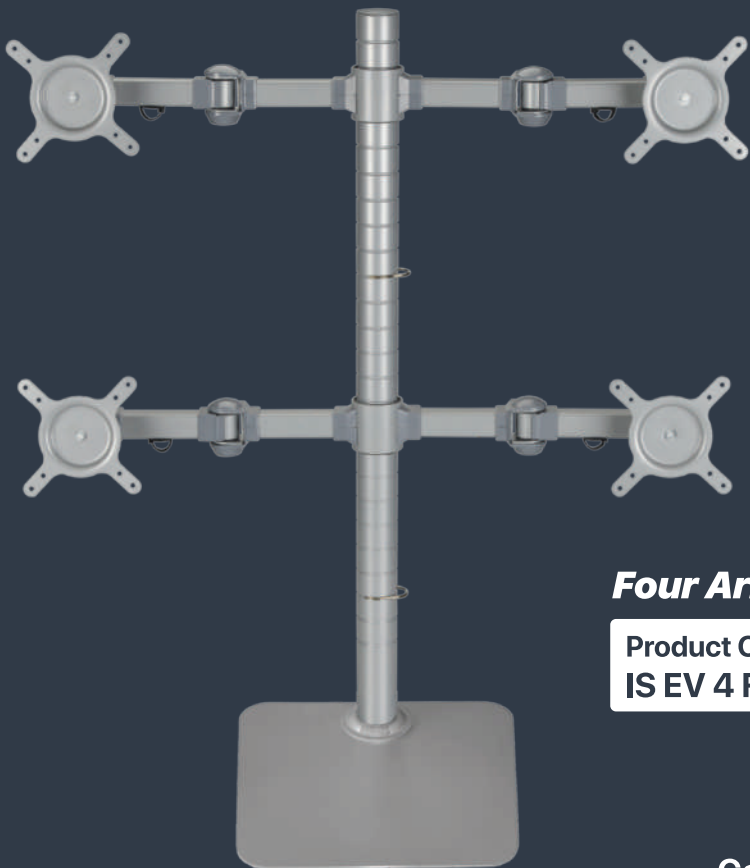
Product Code:  
**IS EV WM D**

- Keeping monitors off the table will help to save space. One can plan 6" shorter table, hence cost of table is reduced.
- Mounting options-  
Flange | Clamp |  
Free standing (For selected models)
- Supports monitors up to 10 kg

- Portrait and Landscape viewing option
- Compatible with all VESA Standard Monitors (75mm x 75mm and 100mm x 100mm)
- Colour: Metallic Silver Grey



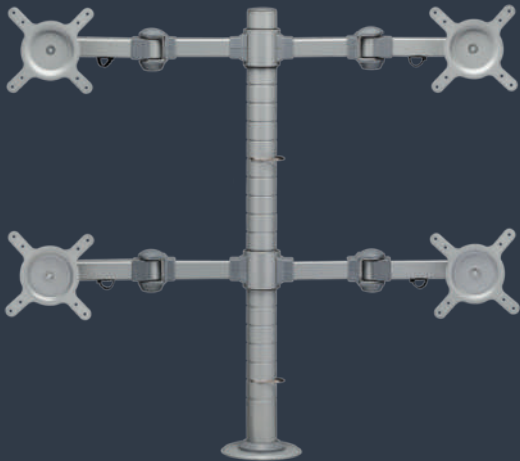




**Four Arm with Freestanding Base**

Product Code:  
IS EV 4 FS

Colour: Metallic Silver Grey



**Four Monitor**

Product Code:  
IS EV 4 F



**Fixed Thin Client Holder**

Product Code:  
IS TCH EV



FOLDING TABLE

- Knob operated Folding Mechanism
- With Bookshelf
- All Four Lockable Castors
- Stackable
- Colour: White
- With Modesty Panel Brackets



Product Code:  
IS FT 04

Suitable for table tops:  
600x1200  
600x1500  
600x1800



Desk Converter DC 01

- Minimum Height: 45mm
- Maximum Height: 405mm
- Table top size: 670mm X 470mm
- Height Adjustment: Manual
- Weight Capacity: 8 kg

Product Code:  
IS DC 2601



FEATURES:

- |                                    |  |
|------------------------------------|--|
| • Spring Mechanism                 | • Slim and Space saving                    |
| • Height Lockable at 6 levels      | • Anti-skid pads for scratch-free surfaces |
| • Lever for easy height adjustment |  |



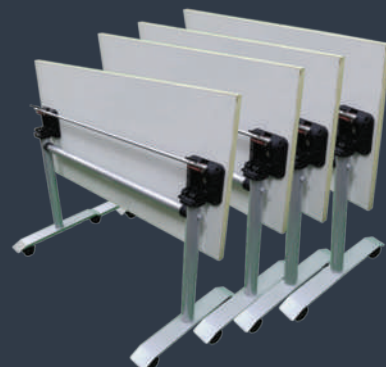
# EasyFold

# INNOFIT™

## **FOLDING TABLE** **FOLD IT! ROLL IT! STACK IT!**



Product Code:  
IS FT 02



- German Mechanism
- Stackable
- All Four Lockable Castors
- Colour: Metallic Silver Grey
- Modesty Panel Brackets (optional)

### Available Sizes:

- 600 x 1200mm
- 750 x 1200mm
- 600 x 1500mm
- 750 x 1500mm



# InnoFold



Product Code:  
IS FT 03



- Premium Design
- Stackable
- All Four Lockable Castors
- Colour: White
- Modesty Panel Brackets (optional)

### Suitable for table tops:

- Length: 1200 ~ 1800mm
- Width: 600 ~ 800mm





## **CONFERENCE ROOM SOLUTION** **HEIGHT ADJUSTABLE CONFERENCE TABLE**



### **3 Motor 3 Stage**

**Product Code:**  
**IS CONF 3M 3S**

Control Panel with LED Display  
4 Memory presets  
Anti-collision  
Hi-quality rugged steel



- Frame length adjustability: 1800 - 2900mm
- Minimum table top size: 900 x 2000mm
- Maximum table top size: 1200x 3000mm (up to 10 seaters)
- Weight Capacity: 150 kg



## ***THE HEIGHT OF YOUR CONVENIENCE AT YOUR FINGERTIPS!***



### ***Single Motor, 2 Stage***

**Product Code:**  
**IS HAT 1M 2S**

- Minimum Height: 710mm
- Maximum Height: 1190mm
- 3 Memory Presets
- Digital Display of Height
- Weight Capacity: 80 kg

### ***2 Motor, 2 Stage***

**Product Code:**  
**IS HAT 2M 2S**

- With Anti-collision Feature
- Minimum Height: 720mm
- Maximum Height: 1220mm
- Above heights are including table top
- Control Panel with LED Display & 4 Memory Presets
- Weight Capacity: 120 kg



- Easy to operate, smooth to lift
- Soft start/stop technology, no jerking and no jolting

- High quality rugged steel
- Colour: White



## HEIGHT ADJUSTABLE TABLE

### **2 Motor, 3 Stage**

**Product Code:**  
**IS HAT 2M 3S**

- Minimum Height: 660mm
- Maximum Height: 1310mm
- Above heights are including table top
- Control Panel with LED Display & 4 Memory presets
- Weight Capacity: 120 kg



### **Manual, 2 Stage**

**Product Code:**  
**IS MT 2S**

- Minimum Height: 700mm
- Maximum Height: 1150mm
- Above heights are including table top
- Weight Capacity: 80 kg







# INNCFITT™

## ***SINGLE COLUMN HEIGHT ADJUSTABLE TABLE***



### ***Single Column Hydraulic***

**Product Code:**  
**IS HYL SC HAT**

- Table top size: 800mm x 560mm
- Minimum Height: 755mm
- Maximum Height: 1126mm
- Multiple Height Levels
- Weight Capacity: 8 kg
- Provision for Tab & Glass holder

### ***Single Column Hydraulic Stackable Folding Table***

**Product Code:**  
**IS HYL SC HAT FT**

- Table top size: 600mm x 520mm
- Minimum Height: 820mm
- Maximum Height: 1190mm
- Multiple Height Levels
- Table top can be tilted in multiple angles (10°, 20°, 30°, 90°)
- Stackable
- Weight Capacity: 8 kg
- Edge stopper



Foldable Table  
Top



Adjustable Tilt



Edge Stopper



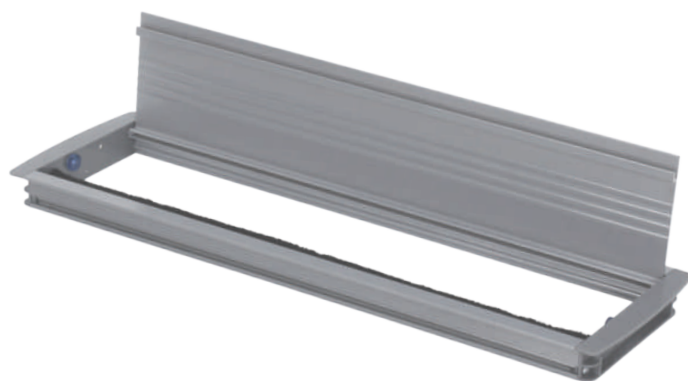
Multiple Height  
Levels



## ACCESS FLAP

- Available in: 300mm, 450mm & 600mm
- Cut Out: 132mm × 316/466/616mm
- Out to Out: 148mm x 332/482/632mm
- Option: Gasket & Brush

**Colours:** Metallic Silver Grey & Frosty White

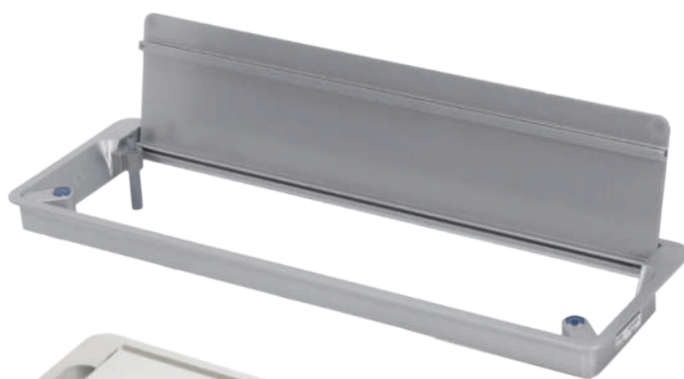


- Easy to access electricals under the table
- Import Substitute
- With optional soft close feature
- Available in other sizes on request

## XIOFLIP

- Available in: 300mm & 450mm
- Cut Out: 140mm x 319/468mm
- Out to Out: 154mm x 332/482mm
- Option: With or without brush

**Colours:** Metallic Silver Grey & Frosty White

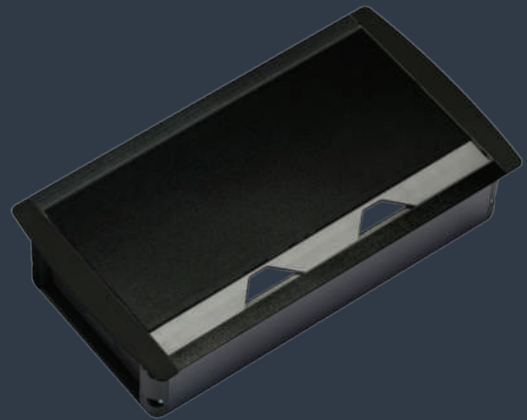
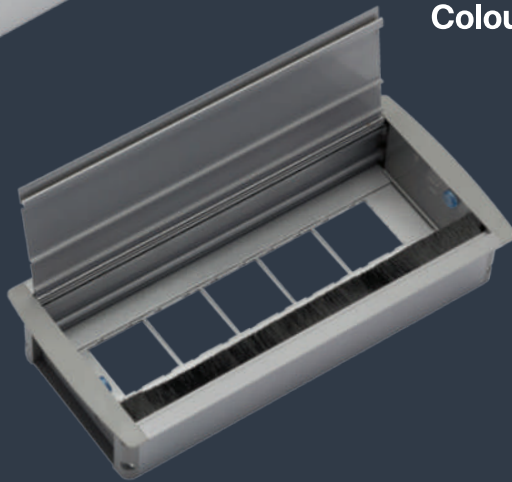


## ***FTB 154 Manual***



- Available in 6, 8, 10 & 12 modules
- Elegant Design
- Option of Gasket or Brush
- Cut Out: 132mm x 216/266/316/366mm
- Out to Out: 154mm x 232/282/332/382mm

**Colour:** Metallic Silver Grey  
Black  
White



- Eliminates carpentry work
- Smart looks
- Easy to install

### ***The perfect solution for connectivity on:***

- Conference tables
- Meeting room tables
- Desking tables
- Linear workstations
- Lab furniture
- Hotel rooms
- Educational furniture
- TV studios

## ***FTB 164 Hydraulic***



- Hydraulic Mechanism
- Smooth Operation
- Cut Out: 110mm x 225mm
- Out to Out: 118 x 265mm

**Colour:** Silver

Configuration: 2 Power, 2 Data Cat 6, VGA,  
HDMI, Audio, USB



## DeskPort 180 Motorized

FTB - 180

Product Code:  
IS FTB 180/23 - 12M

- Pre-wired
- Rotate by pressing the button
- Configuration: 1 Switch, 2 Universal Sockets, 1 USB Charger A+C 18W, 2 Data Cat 6, 1 HDMI
- Colour: Sparkle Silver
- Out to Out: 110mm x 404mm
- Cut Out size: 103mm x 373mm



## DeskPort 170 Revolve

FTB 170 Revolve 8 Module

Product Code:  
IS FTB 170/23 - 8M



- Pre-wired
- Turn 180° to open & close panel
- Configuration: 1 Switch, 2 Universal Sockets, 1 USB Charger A+C 18W, 2 Data Cat 6
- Colour: Sparkle Silver
- Out to Out: 110mm x 300mm
- Cut Out size: 103mm x 268mm

## DeskPort 170 Revolve

FTB 170 Revolve 9 Module

Product Code:  
IS FTB 170/23H - 9M

- Pre-wired
- Turn 180° to open & close panel
- Configuration: 1 Switch, 2 Universal Sockets, 1 USB Charger A+C 18W, 2 Data Cat 6, 1 HDMI
- Colour: Sparkle Silver
- Out to Out: 110mm x 325mm
- Cut Out size: 103mm x 293mm





## FTB 165 FlipUp

Product Code:  
IS FTB 165 FP

- Pre-wired
- Superior enclosure for Power sockets & Ports
- Configuration: 1 USB Charger A+C 18W, 2 Universal Sockets, 1 Data Cat 6, 1 HDMI
- Colour: SS Brush / Panel: Black
- Out to Out: 102mm x 284mm
- Cut Out size: 71mm x 270mm



## FTB 165 Slider

Product Code:  
IS FTB 165 SL

- Pre-wired
- Smooth Sliding Panel
- Configuration: 2 Universal Sockets, 1 USB A+C Charger 18W, 1 Data Cat 6, 1 HDMI
- Colour: SS brush / Panel: Black
- Out to Out: 100mm x 280mm
- Cut Out size: 73mm x 272mm



KBD SOLUTIONS  
(PLASTIC)



Keyboard Drawer (Denzo)  
with softPAD

Keyboard Drawer (Denzo)

- Large Pencil Compartment
- Tray size: 535mm (W) x 200mm (D)

Product Code:  
IS KD Denzo (Basic)  
IS KD Denzo MT

(With Mouse Tray)  
Colour: Black

- With cushioned softPAD
- Tray size: 535mm (W) x 200mm (D)

Product Code:  
IS KD Denzo SP  
IS KD Denzo SP MT

(With Mouse Tray)

Keyboard Drawer (Plastic) - KD 575

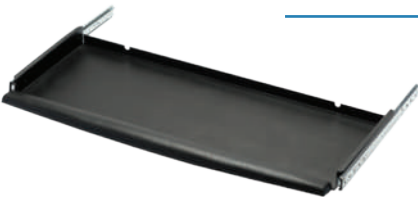
- Integral Pencil Holder
- Tray size: 575mm (W) x 300mm (D)

Product Code:  
IS KD 575 P  
IS KD 575 P MT

(With Mouse Tray)  
Colour: Black



KBD SOLUTIONS (METAL)



Keyboard Drawer (Metal) 25"

- Accommodates Mouse alongside Keyboard
- Tray size: 645mm (W) x 225mm (D)

Product Code:  
IS KD 645 M  
IS KD 645 M SP

(With softPAD)  
Colour: Black



Keyboard Drawer (Metal) 19" SST

- With High Performance Imported Slides
- Tray size: 510mm (W) x 200mm (D)
- Economical

Product Code:  
IS KD 510 M SST  
IS KD 510 MT SST

(With Mouse Tray)  
Colour: Black



Keyboard Drawer (Metal) 19"

- With High Performance Imported Slides
- Tray size: 510mm (W) x 200mm (D)

Product Code:  
IS KD 510 M  
IS KD 510 M MT

(With Mouse Tray)  
Colour: Black

- With cushioned softPAD
- Tray size: 535mm (W) x 200mm (D)

Product Code:  
IS KD 510 M SP  
IS KD 510 M SP MT

(With Mouse Tray)  
Colour: Black



# CPU SOLUTIONS

INNOFIT<sup>TM</sup>



## CPU Holder (Fixed)

Product Code:  
**IS CPU HL**  
**IS CPU HL SLM**

- Width Adjustable (150mm to 225mm)
- Height Adjustable (300mm to 475mm)

**Colour:** Black

Also available in **Slim Version**  
Width Adjustable (80-120)



**Load  
Bearing  
Capacity  
8-10 kg**

## CPU Holder (Swivel & Pull Out)

Product Code:  
**IS CPU HL SW PL**  
**IS CPU HL SW**

- Swivel & pull out for easy access to the rear of the CPU
- 360° Swivelling
- Height Adjustable (300mm to 425mm)
- Width Adjustable (150mm to 225mm)

**Colour:** Black

Also available in **Swivel** only



## CPU Trolley SST

Product Code:  
**IS CPU SST**

- With Lockable Castors for easy mobility
- Width Adjustable
- Economical

**Colour:** Black



## Thin Client Holder

Product Code:  
**IS TCH 01**

- Saves table space
- 360° Swivelling
- Easy access to rear panel
- Height Adjustable (30mm to 50mm)

**Colour:** Black



## GOOD POSTURE STARTS FROM YOUR FEET

### ErgoREST- Footrest

Product Code:  
IS ER 445

- Ergonomic Footrest
- Promotes Stress-free Posture
- Angle Adjustable
- Slip resistant surface
- Reduces pressure on the back of the thigh
- Platform Size: 445mm (W) x 295mm (D)

Colour: Black



## COMPLETE CONVENIENCE AT YOUR FINGERTIPS

### Easyfit Drawer - Small

Product Code:  
IS ED 3025 F

Inner Dimension  
215mm (W) x 320mm (D) x 60mm (H)

Cost-effective alternative  
to 3 drawer pedestal



### Easyfit Drawer - Big

Product Code:  
IS ED 4130 F

Inner Dimension  
415mm (W) x 300mm (D) x 60mm (H)



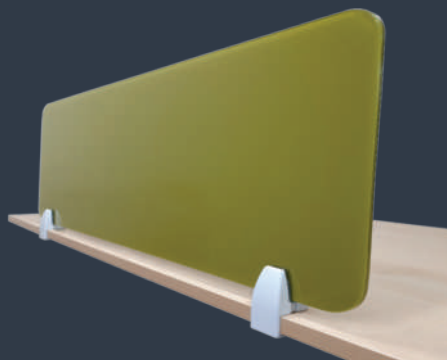
- Ready to install
- Slides and Mounting Brackets included
- Can use Wooden Facia instead of Metal Facia





## ***PARTITION HOLDER***

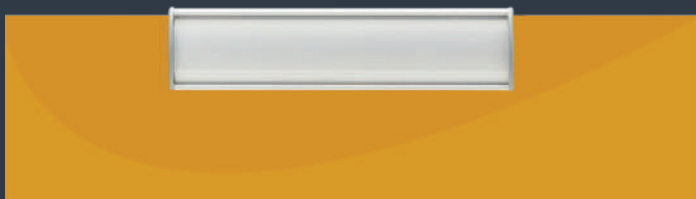
- For all types of screens (Glass, Acrylic, MDF, etc)
- Width Adjustable
- Available in White & Metallic Silver Grey



**Product Code:**  
**IS PH CLMP 25**



**Product Code:**  
**IS PH 01**



## ***NAME PLATE***

**Product Code:**  
**IS NP 50210**

- Size: 210mm (L) x 50mm (H)
- Various mounting options available
  - Z Type
  - U Type
  - Plain
- Can also be customized

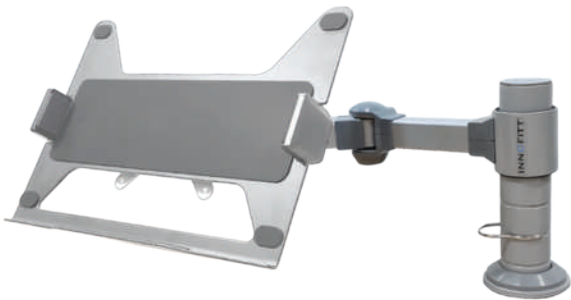


**MONITOR ARM WITH LAPTOP HOLDER**



**LAPTOP STAND**

Product Code:  
IS EV LPTS2 F  
IS EV LPTS2 C

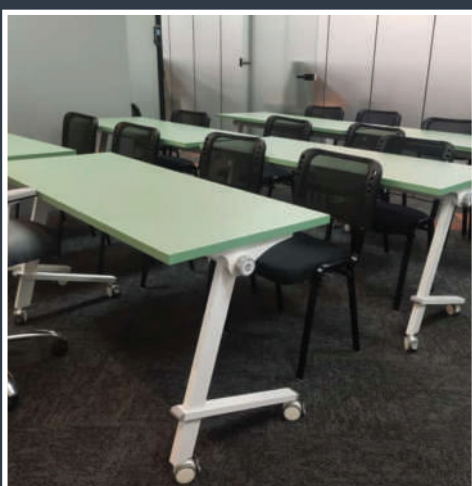
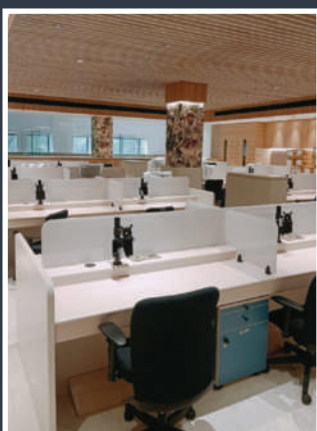
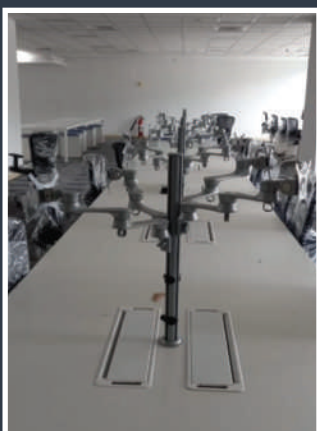
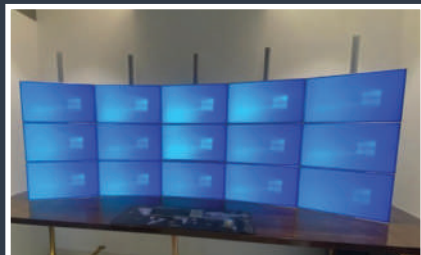


- Desk mounted Laptop Stand
- Robust Ergonomic Design
- For Laptops up to 17 inches
- Swivel and Height Adjustable
- Saves table space
- Option of Clamp Mount or Flange Mount
- Colour: Metallic Sliver Grey



# PROJECT IMAGES

PAN INDIA



# LIST OF INSTALLATIONS

## CO-WORKING

- Smartworks
- Simpliwork
- Awfis
- UrbanWrk
- WeWork
- Indiqube
- Workafella
- ClayWorks
- Table Space
- Enzyme

## CORPORATES

- Mercedes Benz
- Samsung
- NDTV
- Asian Paints
- Taj Group
- Cap Gemini

## BFSI

- Citi
- ICICI Bank
- HDFC Bank
- Morgan Stanley
- BNP Paribas
- Standard Chartered
- Axis Bank
- State Bank of India
- JPMC
- Nomura

## INSTITUTIONAL

- Mumbai Police Control Room
- Bangalore Air Traffic Control
- Indian Navy
- Bombay Stock Exchange
- Manipal School of Architects
- Mumbai Air Traffic Control

## IT

- IBM
- Dell
- HP
- Google
- Microsoft
- TCS
- Wipro
- Infosys
- Directi
- Genpact

### CORPORATE OFFICE & DISPLAY:

No. 506 Ascot Centre, Sahar Airport Rd, Opp. ITC Maratha, Andheri East, Mumbai, Maharashtra 400099.

### PUNE FACTORY & DISPLAY:

Plot No 114, Ramtekdi Industrial Estate, Near Vertiv, Hadapsar, Pune 411 013.

 1800 120 2429  [marketing@innofitt.com](mailto:marketing@innofitt.com)  [www.innofitt.com](http://www.innofitt.com)

MUMBAI | PUNE | BENGALURU | DELHI NCR