

# ENHANCING PRODUCTIVITY AT WORK

**INNOFITT™**  
Intelligent Workplace Solutions







## INTELLIGENT WORKPLACE ACCESSORIES

Innofitt Systems manufactures intelligent workplace accessories, helping offices transform into some of the most productive workplaces. Innofitt helps to make people more efficient and productive. Backed by over a decade of experience in the industry, our exclusive product range is recommended by leading architects. Our client's list includes top furniture manufacturers, furniture importers and interior contractors and select corporate/ institutions who have installed our products at hundreds of prestigious sites.

### MANUFACTURING PLANT

Innofitt Systems Pvt Ltd is the only company in India dedicated only to manufacturing accessories for the workplace. Pioneered by a team of professionals and technically qualified people, its products are manufactured at its production unit at Pune.

### INNOFITT THE OFFICE SPECIALIST

We have made a conscious choice to make the office domain our forte. By focusing on and understanding this segment fully, we strive to align our products and solutions to our customer's goal. Consequently, our products are specifically designed for offices and are easy to install, use and maintain. Innofitt helps architects, interior contractors and furniture manufacturers to meet their goals of making highly functional, productive and comfortable office spaces.

### ERGONOMICS OUR MANTRA FOR WELLNESS

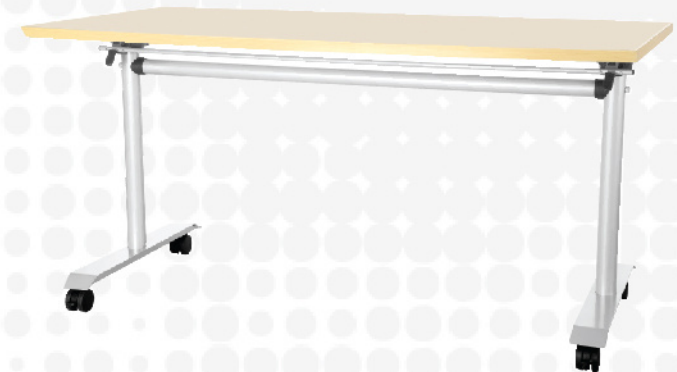
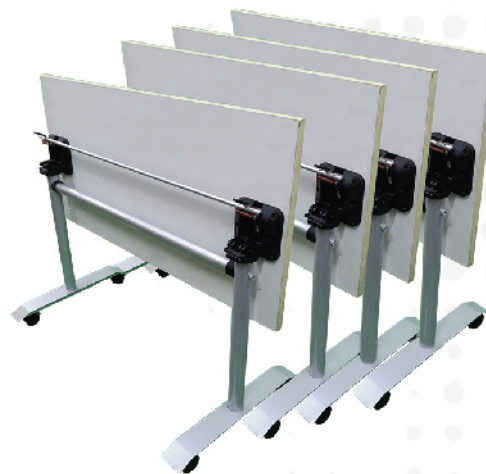
We apply the science of Ergonomics to our products so that they provide natural comfort and avoid stress or injury. Our designs ensure that humans and technology work in complete harmony leading to employee wellness. We truly understand the need of the hour, and products like our height adjustable Monitor Arms, Footrests and Articulated Keyboard Drawers are testament to this fact. Innofitt solutions are tailored to preserve health, improve productivity and maintain comfort in the workplace.





# STACK IT! ROLL IT! FOLD IT!

## FOLDING TABLE



## SMARTER & STRONGER

**Product Code**  
• IS FT 02

- ◆ German Mechanism
- ◆ Stackable
- ◆ All four Lockable Castors
- ◆ Colour: MSG
- ◆ Modesty panel bracket (optional)

Available Sizes:

- ◆ 600 x 1200mm
- ◆ 600 x 1500mm
- ◆ 750 x 1200mm
- ◆ 750 x 1500mm

**5 Years Warranty** T&C Apply

Due to constant improvement, specifications are subject to change without notice

## FOLDING TABLE



**Product Code**  
• IS FT 03

- ◆ Premium Design
- ◆ Stackable
- ◆ All Four Lockable Castors
- ◆ Colour: White
- ◆ Modesty panel bracket (optional)

**Suitable For Table Tops:**

- ◆ Length: 1200mm ~ 1800mm
- ◆ Width: 600mm ~ 800mm





# HAT - CONFERENCE TABLE

## 3 MOTOR, 3 STAGE



Product Code  
• IS CONF 3M 3S

MAKE YOUR  
STANDING  
BRAINSTORMING  
SESSIONS MORE  
CREATIVE



- ◆ Control panel with LED display
- ◆ 4 Memory presets
- ◆ Anti-Collision
- ◆ Hi-quality rugged steel

- ◆ Frame length adjustability: 1800 - 2900mm
- ◆ Minimum table top size: 900 x 2000mm
- ◆ Maximum table top size: 1200 X 3000mm (up to 10 seaters)
- ◆ Load-bearing capacity: 150 kg

5 Years Warranty T&C Apply

Due to constant improvement, specifications are subject to change without notice



# THE HEIGHT OF CONVENIENCE AT YOUR FINGERTIPS!

- ◆ EASY TO OPERATE, SMOOTH TO LIFT
- ◆ HIGH QUALITY RUGGED STEEL
- ◆ SOFT START/STOP TECHNOLOGY, NO JERKING AND NO JOLTING
- ◆ COLOUR: WHITE



**Product Code**  
•IS ET 2M 2S

**2 MOTOR,  
2 STAGE**

- ◆ With Anti-Collision Feature
- ◆ Minimum Height: 710mm
- ◆ Maximum Height: 1170mm
- ◆ All heights including table top
- ◆ Control Panel with LED display & 4 Memory Presets



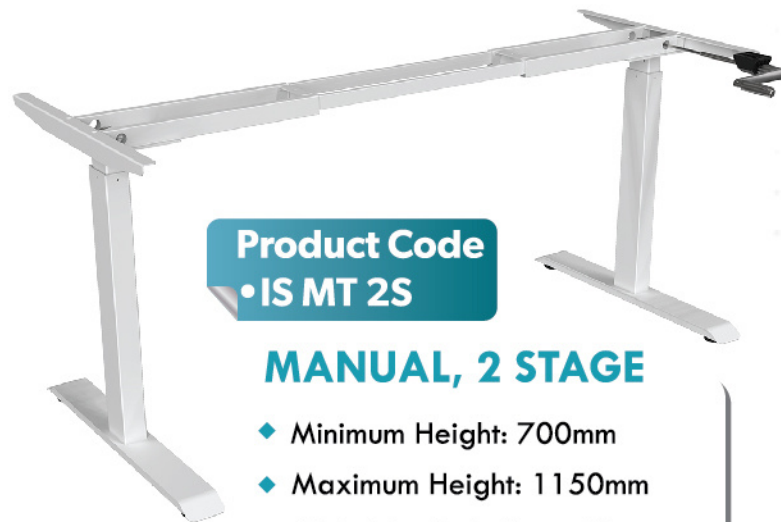
**Product Code**  
•IS ET 2M 3S

**2 MOTOR,  
3 STAGE**

- ◆ Minimum Height: 660mm
- ◆ Maximum Height: 1310mm
- ◆ All heights including table top
- ◆ Control Panel with LED Display & 4 Memory Presets



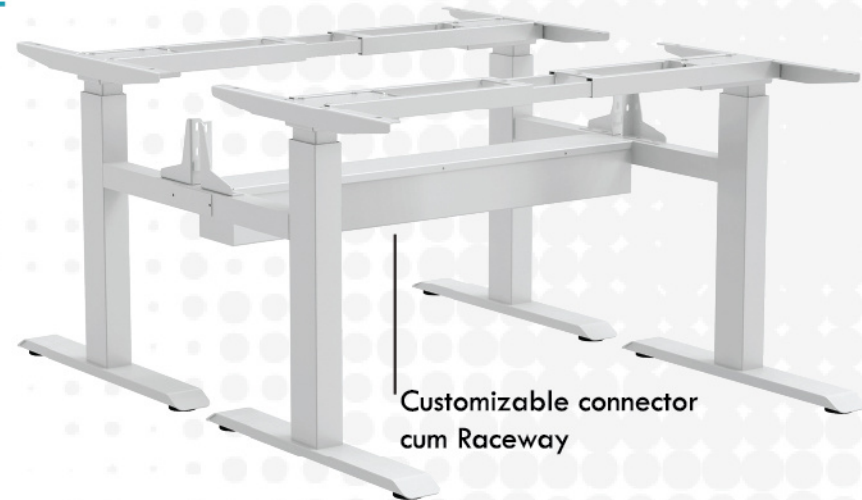
# HEIGHT ADJUSTABLE TABLE



**Product Code**  
•IS MT 2S

## MANUAL, 2 STAGE

- ◆ Minimum Height: 700mm
- ◆ Maximum Height: 1150mm
- ◆ All heights including table top



Customizable connector  
cum Raceway

**Product Code**  
•IS ET 4M 2S B2B

## BACK TO BACK, 2 STAGE

- ◆ Minimum Height: 710mm
- ◆ Maximum Height: 1170mm
- ◆ All heights including table top
- ◆ Control Panel with LED Display & 4 Memory Presets

**Product Code**  
•IS ET 3S 3M L

## L SHAPED, 3 STAGE

- ◆ Minimum Height: 660mm
- ◆ Maximum Height: 1310mm
- ◆ All heights including table top
- ◆ Control Panel with LED Display & 4 Memory Presets

**5 Years Warranty** T&C Apply

Due to constant improvement, specifications are subject to change without notice

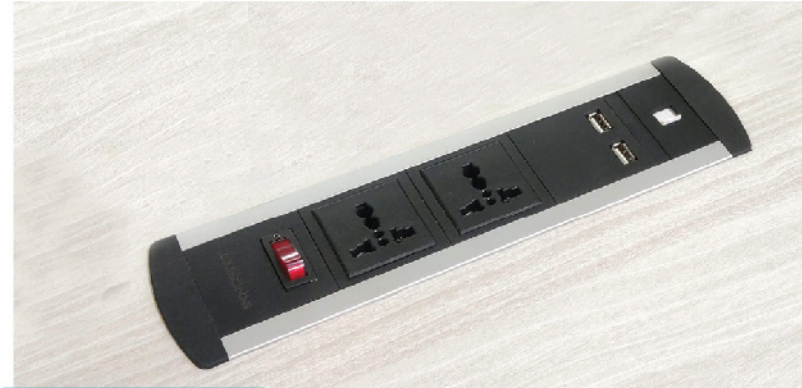


## PDX RANGE

- ◆ MADE IN INDIA
- ◆ ALL CONFIGURATIONS POSSIBLE
- ◆ IMPORT SUBSTITUTE
- ◆ FASTER LEAD PERIODS



**CONSOLE**



**SURFACE**



**PDU - Raceway**



**PDU - Under Table**



### PDX CONSOLE

An elegant solution for connectivity on all types of tables



### PDX SURFACE

Fixed on the surface of the table



### PDX PDU

Fixed under the table on Raceway



### PDX PDU UT

Fixed under the table

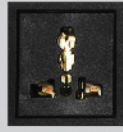


CE CERTIFIED

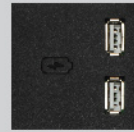
## AVAILABLE IN VARIOUS CONFIGURATION OPTIONS



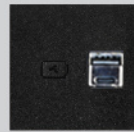
Switch



Power



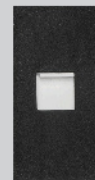
USB Charger  
(Dual Port)



USB  
A+C Port



Data Cat6



Telephone



HDMI



USB Port



GST Connector (Optional)

5 Years Warranty T&C Apply

Due to constant improvement, specifications are subject to change without notice





## ULTRA COMPACT



**Product Code**  
• IS UC PS

POWER, SWITCH



**Product Code**  
• IS UC PU

POWER, USB CHARGER

- ◆ Material: Nylon GF
- ◆ Colour: Black
- ◆ Table Cut Out Size: 76 X 62mm

Switch Socket  
CE Marked

**5 Years Warranty** T&C Apply

## MIKRO USB



**Product Code**  
• IS MUC 48

USB CHARGER



- ◆ Material: Plastic
- ◆ Colour: Black
- ◆ Table Cut Out Size: Ø48mm



Due to constant improvement, specifications are subject to change without notice

- ◆ PERFECT FOR INDIVIDUAL WORKSTATIONS AND MEETING ROOMS
- ◆ SPACE SAVING



**Product Code:**  
• IS CMP PSUD

POWER, SWITCH,  
USB CHARGER, DATA



**Product Code**  
• IS CMP PSUH

POWER, SWITCH,  
USB CHARGER, HDMI



**Product Code**  
• IS CMP PSD

POWER, SWITCH, DATA



**Product Code**  
• IS CMP PSUU

POWER, SWITCH,  
2 USB CHARGER



**Product Code**  
• IS CMP PSU

POWER, SWITCH,  
USB CHARGER



**Product Code**  
• IS CMP PSH

POWER, SWITCH, HDMI



**Product Code**  
• IS CMP PS

POWER, SWITCH

Switch Socket  
CE Marked

Out to Out Size: Ø 100  
Cut Out Size: Ø 91



# VERTEBRAE



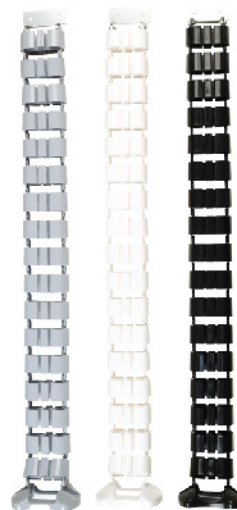
**Product Code**  
• IS VBT 17L/BC

◆ Vertebrae for 750 mm fixed table



**Product Code**  
• IS VBT 23L/CHB

◆ For HAT back to back connector



Colours Options:  
Grey, White & Black  
Material: Plastic

**VERTEBRAE for  
Height Adjustable Table**



**Product Code**  
• IS VBT 29L/BC

◆ Vertical Cable Manager for  
Height Adjustable Tables



**Product Code**  
• IS VBT 26L/HZ

◆ Horizontal Cable Management  
with Anti-sag Clip

**5 Years Warranty** T&C Apply

Due to constant improvement, specifications are subject to change without notice

# AN ELEGANT ADDITION TO EVERY OFFICE!



## The perfect solution for connectivity on:

- ◆ Conference Tables
- ◆ Meeting Room Tables
- ◆ Desking Tables
- ◆ Linear Workstations
- ◆ Lab Furniture
- ◆ Hotel Rooms
- ◆ Educational Furniture
- ◆ TV Studios
- ◆ Eliminates Carpentry Work
- ◆ Smart Looks
- ◆ Easy to install



FTB - 154

Colour: Metallic Silver Grey



FTB - 154 With Accessories

## DeskPort 154 Manual

- ◆ Available in 6, 8, 10 & 12 modules
- ◆ Elegant Design
- ◆ Option of Gasket or Brush
- ◆ Cutout: 132 mm x 216/266/316/366mm
- ◆ Out to Out: 154 mm x 232/282/332/382mm

## DeskPort Hydraulic

- ◆ Hydraulic Mechanism
- ◆ Smooth Operation
- ◆ Cutout: 110mm x 225mm
- ◆ Out to Out: 118 x 265mm

### FTB - 164

#### Configuration:

2 Power, 2 Data, VGA, HDMI, Audio, USB



FTB - 164

Colour: Silver

**5 Years Warranty** T&C Apply

Due to constant improvement, specifications are subject to change without notice

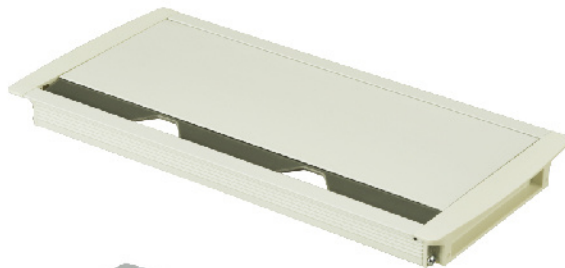


### DeskPort XioFlip

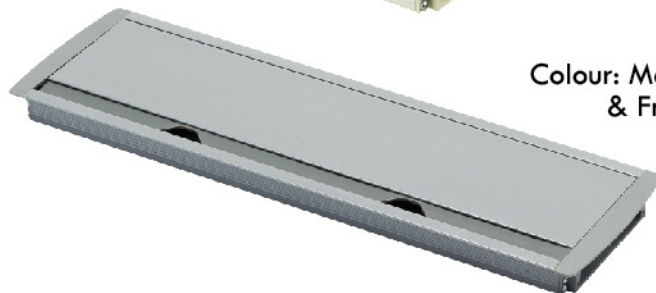
- ◆ Easy to access electricals under the table from all three sides
- ◆ Import Substitute
- ◆ With optional soft close feature
- ◆ Option: with or without Brush
- ◆ Available in: 300mm & 450mm
- ◆ Cutout: 140mm x 319/468mm
- ◆ Out to out: 154mm x 332/482mm



Colour: Metallic Silver Grey  
& Frosty White



Colour: Metallic Silver Grey  
& Frosty White



### DeskPort Access Flap

- ◆ Easy to access electricals under the table
- ◆ With optional soft close feature
- ◆ Available in: 300mm, 450mm & 600mm
- ◆ Cutout: 132mm x 316/466/616mm
- ◆ Out to out: 148mm x 332/482/632mm
- ◆ Option: Gasket & Brush



## ALUMINIUM DIE CAST SERIES



Single Monitor

**Product Code**  
•IS FX F



Dual Monitor

**Product Code**  
•IS FX 2 F

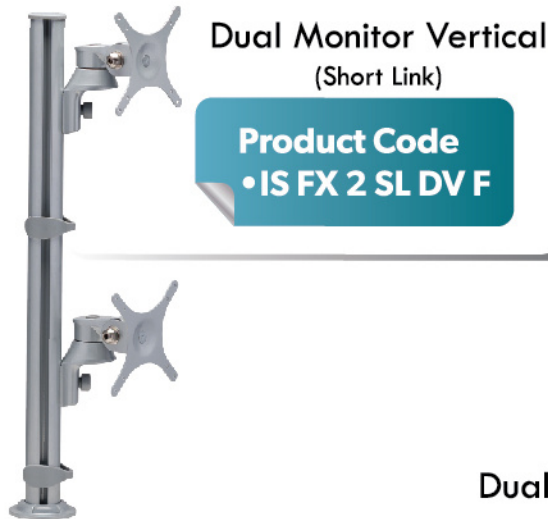


- ◆ Enhanced Ergonomics: Reduces risk of head, neck and eye strain
- ◆ Precision engineered to prevent cantilever effect
- ◆ Space saving
- ◆ Allows user to adjust the position of one or multiple screens with minimum effort and maximum precision
- ◆ Swivel, Tilt, and 360° rotation allows you exceptional mobility
- ◆ Concealed cable management

**5 Years Warranty** T&C Apply

Due to constant improvement, specifications are subject to change without notice





**Dual Monitor Vertical**  
(Short Link)

**Product Code**  
•IS FX 2 SL DV F



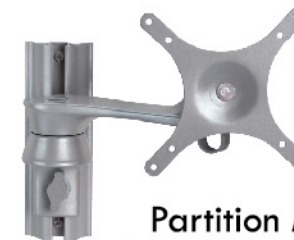
**Dual Arm with Freestanding Base**  
*Enquire for other Configurations*

**Product Code**  
•IS FX 2FS



**Dual Monitor**  
(Vertical Mount)

**Product Code**  
•IS FX 2 DV F



**Partition Mount**

**Product Code**  
•IS FX PM 02

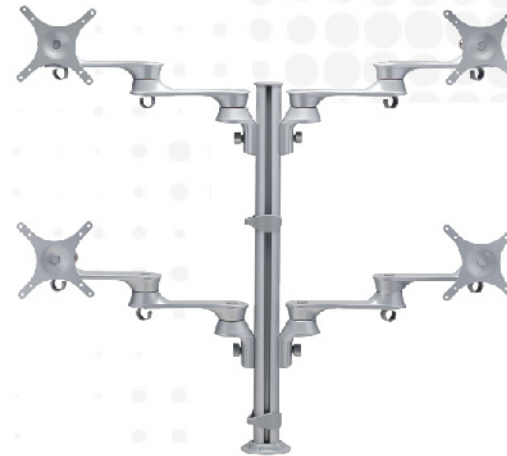
### Partition Mount

- ◆ Height Adjustable
- ◆ Keeping monitor off the table will help to save table space. One can plan 6" shorter table, and save cost
- ◆ Increased viewing comfort. Reduced Eye, Back and Neck Strain
- ◆ Portrait and landscape viewing option
- ◆ Compatible with all VESA Standard Monitors (75mm x 75mm and 100mm x 100mm)
- ◆ Suitable for fixing on Partition as well as on Wall
- ◆ Supports monitor upto 8 kgs



Trio Monitor

**Product Code**  
•IS FX 3T F



Quad Monitor

**Product Code**  
•IS FX 4 F



Flexi Thin Client Holder

**Product Code**  
•IS TCH FX



Dual Monitor  
(Back to Back)

**Product Code**  
•IS FX 2 BB F



Single Monitor - Short Link

**Product Code**  
•IS FX SL F

Flange Mount



Clamp Mount



**5 Years Warranty** T&C Apply

Due to constant improvement, specifications are subject to change without notice

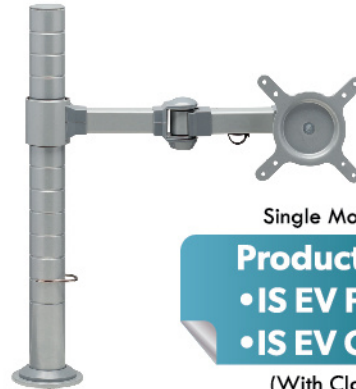


## MONITOR STANDS - STEEL SERIES



Dual Monitor  
(Short Link)

**Product Code**  
• IS EV 2 SL F



Single Monitor

**Product Code**  
• IS EV F  
• IS EV C  
(With Clamp)



Single Monitor (Short Link)

**Product Code**  
• IS EV 1 SL F

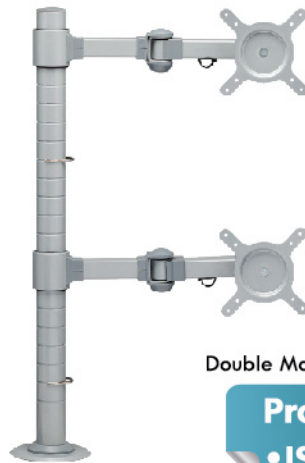


Double Monitor

**Product Code**  
• IS EV 2 F

- ♦ Adjust monitor as per individual user comfort - Height, Distance & Angle
- ♦ Space Saving. Since footprint of stand is much less than footprint of monitor base, architects can shorten table depth by 6"
- ♦ Portrait and Landscape viewing options
- ♦ Compatible with all VESA Standard Monitors (75mm x 75mm and 100mm x 100mm)
- ♦ With Cable Management for neat wiring
- ♦ Each arm supports monitor upto 10 kgs





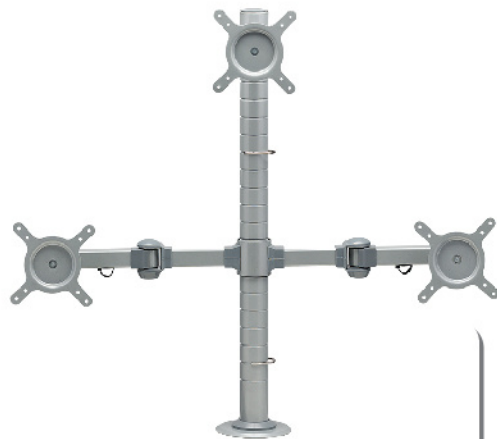
Double Monitor (Vertical Mount)

**Product Code**  
• IS EV 2 DV F



Three Monitor (Horizontal)

**Product Code**  
• IS EV 3 F (H)



Three Monitor (Triangular)

**Product Code**  
• IS EV 3 F (T)

### Partition Mount (Single Link)

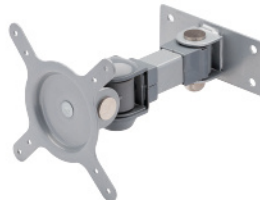


Colour: Metallic Silver Grey

$\pm 45^\circ$  Tilt  
 $\pm 30^\circ$  Swivel

**Product Code**  
• IS EV WM S

### Partition Mount (Double Link)



Colour: Metallic Silver Grey

$\pm 45^\circ$  Tilt  
 $\pm 60^\circ$  Swivel

**Product Code**  
• IS EV WM D

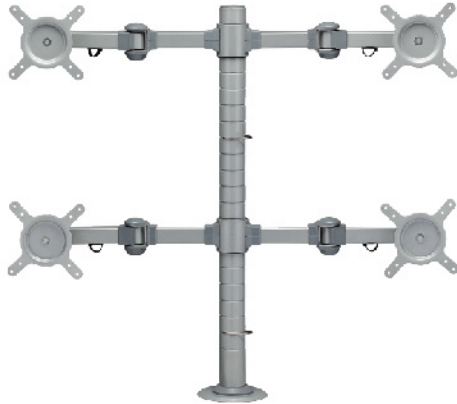
### Partition Mount

- ◆ Keeping monitor off the table will help to save space. One can plan 6" shorter table, hence cost of table is reduced.
- ◆ Increased viewing comfort.
- ◆ Reduces Eye, Back & Neck Strain
- ◆ Portrait and landscape viewing option
- ◆ Compatible with all VESA Standard Monitors (75mm x 75mm and 100mm x 100mm)
- ◆ Suitable for fixing on Wall as well as on Partition
- ◆ Supports monitor upto 10 kgs

**5 Years Warranty** T&C Apply

Due to constant improvement, specifications are subject to change without notice





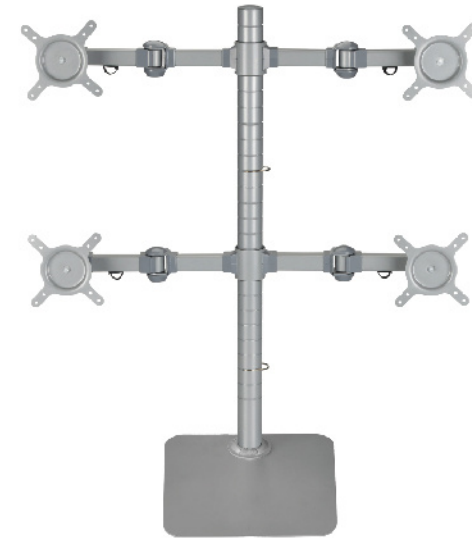
Four Monitor

**Product Code**  
• IS EV 4 F



Fixed Thin Client Holder

**Product Code**  
• IS TCH EV



Four Arm with Freestanding Base  
*Enquire for other Configurations*

**Product Code**  
• IS EV 4 FS

## LAPTOP STAND



- ◆ Desk mounted Laptop Stand
- ◆ Robust Ergonomic Design
- ◆ For Laptops up to 15.6 inches
- ◆ Swivel and height adjustable
- ◆ Saves table space
- ◆ Option of Clamp mount or Flange mount
- ◆ Colour: Metallic Silver Grey

**Product Code**  
 •IS EV LPTS F  
 •IS EV LPTS C



**5 Years Warranty** T&C Apply



## MONITOR ARM WITH LAPTOP HOLDER



**Product Code**  
 •IS EV MA LPT F  
 •IS EV MA LPT C



Due to constant improvement, specifications are subject to change without notice



## TILT, SWIVEL, BEND OR PIVOT

- ◆ Rugged gas spring mechanism
- ◆ Extremely easy to adjust to desired position
- ◆ Quick release VESA mount
- ◆ Height and distance adjustable
- ◆ Size of monitor upto 32"
- ◆ Concealed cable management
- ◆ Both Clamp and Flange mounting solutions included



EasyMove Single Arm

**Product Code**  
**•IS 360 EM 1**



EasyMove Dual Arm

**Product Code**  
**•IS 360 EM 2**



# LARGEST RANGE OF TROUBLEFREE KEYBOARD DRAWERS

## KBD SOLUTIONS (PLASTIC)

### Keyboard Drawer (Denzo)



Colour: Black

- ◆ Large Pencil Compartment
- ◆ Tray Size: 535mm (W) x 200mm (D)

#### Product Code

- IS KD Denzo (Basic)
- IS KD Denzo MT

(With Mouse Tray)

### Keyboard Drawer (Denzo) with SoftPAD

- ◆ With Cushioned SoftPAD
- ◆ Tray Size: 535mm (W) x 200mm (D)

#### Product Code

- IS KD Denzo SP
- IS KD Denzo SP MT

(With Mouse Tray)

### Keyboard Drawer (Plastic) - KD 575



Colour: Black

- ◆ Integral Pencil Holder
- ◆ Tray Size: 575mm (W) x 300mm (D)

#### Product Code

- IS KD 575 P
- IS KD 575 P MT

(With Mouse Tray)

## KBD SOLUTIONS (METAL)

### Keyboard Drawer (Metal) 25"



Colour: Black

- ◆ Accommodates Mouse alongside Keyboard
- ◆ Tray Size: 645mm (W) x 225mm (D)

#### Product Code

- IS KD 645 M
- IS KD 645 M SP

(With SoftPAD)

### Keyboard Drawer (Metal) 19"



Colour: Black

- ◆ With High Performance Imported Slides
- ◆ Tray Size: 510mm (W) x 200mm (D)

#### Product Code

- IS KD 510 M
- IS KD 510 M MT

(With Mouse Tray)

### Keyboard Drawer (Metal) 19" with SoftPAD

- ◆ With Cushioned SoftPAD
- ◆ Tray Size: 535mm (W) x 200mm (D)

#### Product Code

- IS KD 510 M SP
- IS KD 510 M SP MT

(With Mouse Tray)

### Keyboard Drawer (Metal) 19" SST



Colour: Black

- ◆ With High Performance Imported Slides
- ◆ Tray Size: 510mm (W) x 200mm (D)
- ◆ Economical

#### Product Code

- IS KD 510 M SST
- IS KD 510 M MT SST

(With Mouse Tray)

5 Years Warranty T&C Apply

Due to constant improvement, specifications are subject to change without notice



## KEEPS CPU OFF THE TABLE YET EASILY ACCESSIBLE

Load  
Bearing  
Capacity  
8-10 kg

### CPU Trolley



- ◆ With Lockable castors for easy mobility
- ◆ Width Adjustable (150mm to 225mm)

**Product Code**  
• IS CPU TR

Colour: Black

### CPU Trolley SST



- ◆ With Lockable castors for easy mobility
- ◆ Width Adjustable
- ◆ Economical

**Product Code**  
• IS CPU SST

Colour: Black

### CPU Trolley (Terra)



Colour: Black

#### CPU Terra

- ◆ With Lockable castors for easy mobility
- ◆ Width Adjustable (150mm to 225mm)
- ◆ Stylish
- ◆ Flat pack. Tool less assembly

**Product Code**  
• IS CPU Terra

### CPU Holder (Side Mounting)



- ◆ Width Adjustable (150mm to 225mm)
- ◆ Sleek, elegant looks

**Product Code**  
• IS CPU HL SM

Colour: Black

### CPU Holder (Fixed)



Colour: Black

#### CPU Holder

- ◆ With Adjustable (150mm to 225mm)
- ◆ Height Adjustable (300mm to 475mm)

**Product Code**  
• IS CPU HL  
• IS CPU HL SLM

Also available in  
**Slim Version**  
With Adjustable  
(80-120)

### CPU Holder (Swivel & Pull Out)



Colour: Black

- ◆ Swivel & pull out for easy access to the rear of the CPU
- ◆ 360° Swivelling
- ◆ Height Adjustable (300mm to 425mm)
- ◆ Width Adjustable (150mm to 225mm)

**Product Code**  
• IS CPU HL SW PL  
• IS CPU HL SW

Also available in  
**Swivel** only

## ErgoREST- Footrest

# GOOD POSTURE STARTS FROM YOUR FEET



Colour: Black

- ◆ Ergonomic Footrest
- ◆ Promotes Stress free posture
- ◆ Angle adjustable
- ◆ Slip resistant surface
- ◆ Reduces pressure on the back of the thigh
- ◆ Platform Size: 445mm (W) x 295mm (D)

**Product Code**  
• IS ER 445

## COMPLETE CONVENIENCE AT YOUR FINGERTIPS

### • Easyfit Drawer - Big



Dimension  
415mm (W) x 300mm (D) x 60mm (H)

**Product Code**  
• IS ED 4130 F

### EasyFit METAL DRAWER

### • Easyfit Drawer - Small



- ◆ Ready to install
- ◆ Slides and Mounting brackets included
- ◆ Can use wooden facia instead of metal facia

**COST-EFFECTIVE ALTERNATIVE  
TO 3 DRAWER PEDESTAL**

**Product Code**  
• IS ED 3025 F

Dimension  
215mm (W) x 320mm (D) x 60mm (H)

**5 Years Warranty** T&C Apply

Due to constant improvement, specifications are subject to change without notice

### Partition Holder

**Product Code**  
•IS PH 01

- ◆ For all types of screens (Glass, Acrylic, MDF etc)
- ◆ Width Adjustable
- ◆ Available in White and MSG



### Thin Client Holder

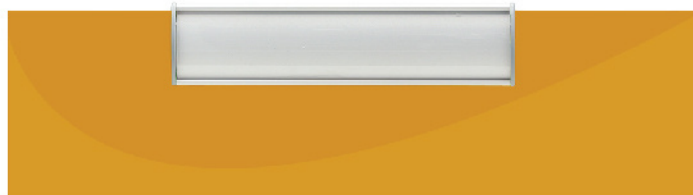
- ◆ Saves table space
- ◆ 360 degrees swivelling.  
Easy access to rear panel
- ◆ Height adjustable (30mm to 50mm)



**Product Code**  
•IS TCH 01



**Product Code**  
•IS PH CLMP 25



**Product Code**  
•IS NP 50210

### Name Plate

- ◆ Size: 210mm (L) x 50mm (H)
- ◆ Various mounting options available
  - Z type
  - U type
  - Plain
- ◆ Can also be customized





**Colour: Silver**

### DeskPort 180 Motorized

#### FTB - 180

- ◆ Cutout: 104mm x 373mm
- ◆ Out to Out: 110mm x 407mm
- ◆ Configuration: 3 Power, 2 Data & 1 HDMI



**Colour: Silver**

### DeskPort 170 Revolve

#### FTB - 170

- ◆ Add a touch of class to your office
- ◆ Pre-wired
- ◆ Cutout: 103mm x 267/322mm
- ◆ Out to out: 110mm x 300/352mm
- ◆ Configuration:
  - 8A: 2 Power, Switch, 2 Data, USB
  - 10A: Switch, 3 Power, 2 Data & 1 HDMI

## LIST OF INSTALLATIONS

### BFSI

- Citi
- ICICI Bank
- HSBC
- HDFC Bank
- Morgan Stanley
- BNP Paribas
- Standard Chartered
- Axis Bank
- State Bank of India
- JPMC
- Nomura
- Birla Sunlife Insurance
- Kotak
- Motilal Oswal Securities
- HDFC Standard Life
- Bombay Stock Exchange
- Edelweiss
- IDFC
- SBI General Insurance
- Franklin Templeton

### CORPORATES

- Mercedes Benz
- Fedex
- Bajaj Auto
- Larsen & Turbo
- UPS
- Dupont
- Boeing
- Kia Motors
- Airbus
- Samsung
- NDTV
- HUL
- Asian Paints
- Suzlon
- Hyatt Regency
- Taj Group
- Cap Gemini
- Dassault

### TELECOM INDUSTRY

- Airtel
- Tata Telecom
- Reliance Telecom
- Ericsson
- Nokia

### IT/ITES

- IBM
- Dell
- HP
- Google
- Microsoft
- TCS
- Wipro
- Infosys
- Directi
- Genpact

### EDUCATIONAL INSTITUTES

- IIM
- IIT- MUMBAI
- D.Y.PATIL
- NID
- SVKM
- Ryan International School

**INNOFITT™**  
Intelligent Workplace Solutions

Mumbai | Pune | Bangalore | Delhi NCR

#### CORPORATE OFFICE & DISPLAY

No. 506 Ascot Centre, Sahar Airport Rd, Behind Hyatt Regency,  
Andheri East, Mumbai 400099.

Enquiry Hotline: 1800 120 2429 | Email: sales@innofitt.com

#### MANUFACTURING PLANT & DISPLAY CENTRE

Plot No. 114, Ramtekdi Industrial Estate,  
Near Emerson Power, Hadapsar,  
Pune - 411 013, India.

[www.innofitt.com](http://www.innofitt.com)

May 2022 V1.1